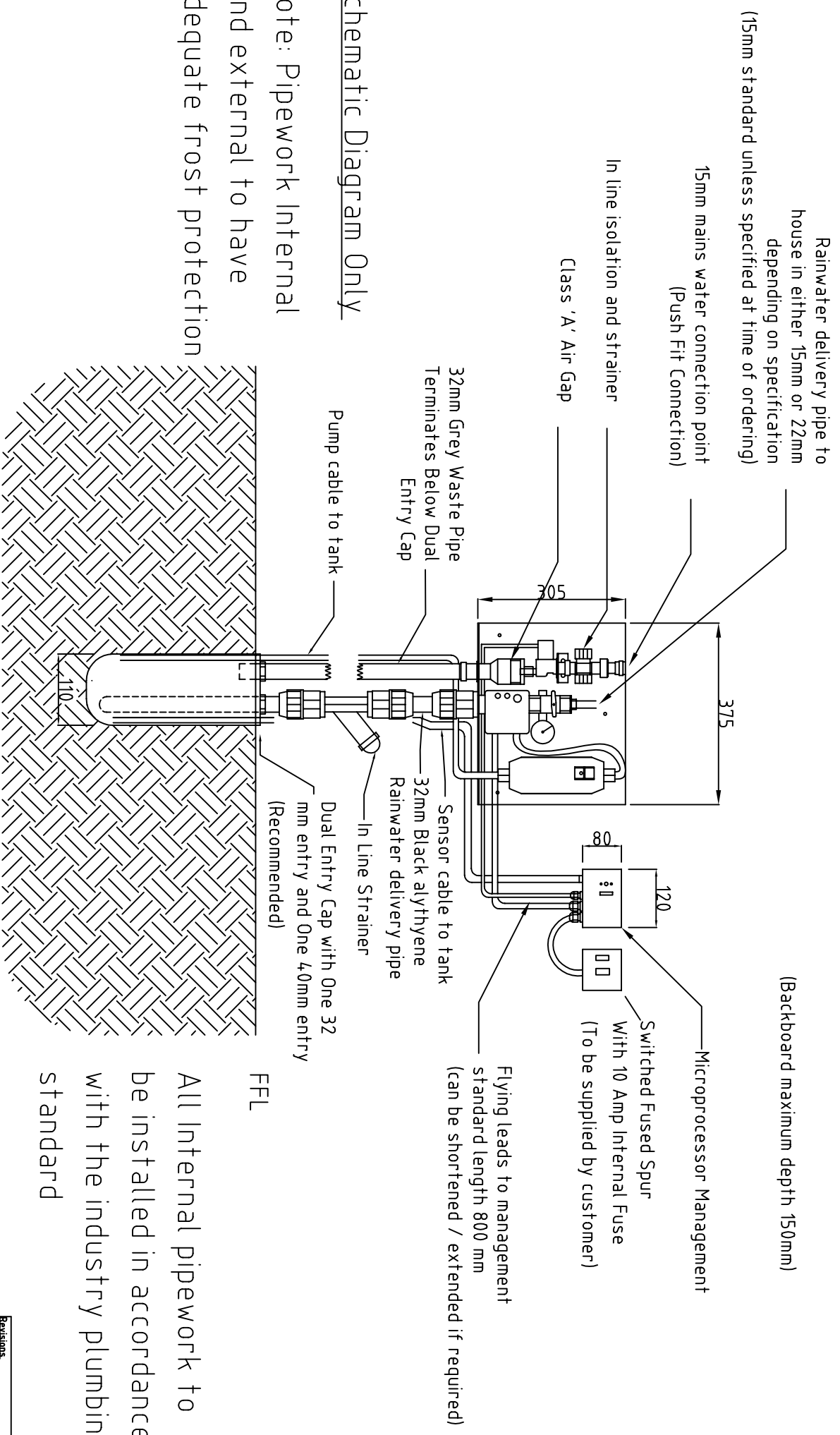


Internal Components Drawing



Rainwater delivery pipe to house in either 15mm or 22mm depending on specification (15mm standard unless specified at time of ordering)

15mm mains water connection point (Push Fit Connection)

In line isolation and strainer

Class 'A' Air Gap

32mm Grey Waste Pipe Terminates Below Dual Entry Cap

Pump cable to tank

Dual Entry Cap with One 32 mm entry and One 40mm entry (Recommended)

Sensor cable to tank
32mm Black alkythene Rainwater delivery pipe

In Line Strainer

Flying leads to management standard length 800 mm (can be shortened / extended if required)

Microprocessor Management
Switched Fused Spur With 10 Amp Internal Fuse (To be supplied by customer)

(Backboard maximum depth 150mm)

Schematic Diagram Only

Note: Pipework Internal And external to have adequate frost protection

FFL
All Internal pipework to be installed in accordance with the industry plumbing standard

Revisions:
a) New Solenoid Valve 14/7/02
b) Strainer details updated 24/07/07



Title: Internal Components Drawing

All dimensions in millimetres unless otherwise stated

Scale: Do not scale

Drawn By: SH

Date: 08/08/02

Checked:

Drg. No 101b